

How to... Access the Glamquest Wi-fi Service Using Windows 7

How to... Access the Glamquest Wi-fi Service
Using Windows 7

Glamquest Wireless Network

Introduction

The Glamquest service provides visitors to the University Of South Wales with internet access via wireless network connections on your own equipment.

The service is now available at Cardiff, Glyntaff and Treforest campuses only.

This guide will show you how to connect your Windows 7 computer to the Glamquest wireless network.

Important note

By logging on to the IT system — via Glamquest — you are agreeing to the terms of the University rules and regulations for computer use (<http://its.southwales.ac.uk/documents/download/4/>).

You are directly responsible for any activity conducted through your IT account, either by yourself or another user, and will be considered responsible for any misconduct or breach of the regulations conducted from that IT account.

Therefore it is important that you **keep your account login information safe** and **do not share your login details** with another person for any reason.

Step 1 Before you start

This document assumes that your device's wireless adapter has already been installed and is known to be working. It is the responsibility of the user to configure and manage their own equipment.

Step 2 Obtaining a Glamguest username and password

In order to access the Glamguest wireless network you must ensure that you have obtained your network username and password, your staff sponsor is responsible for giving your network logon details to you.

If your staff sponsor is unavailable, please call IT Support Services on 01443 4 82882

Step 3 Setting Up Your Windows 7 computer for use with Glamguest

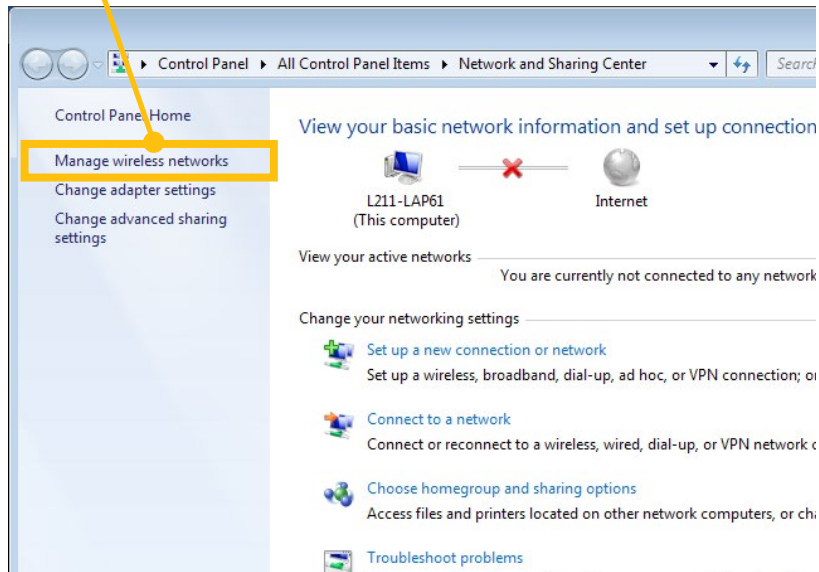
Locate a suitable area where a wireless signal can be received (see page 8 for full details).

After your device boots/loads, ensure that the wireless adapter is switched on.

Access the wireless configuration (the following example screen-shots are from a Windows 7 computer - but the principle of connecting and authenticating is exactly the same on all wireless devices), click on 'Open Network and Sharing Center'.



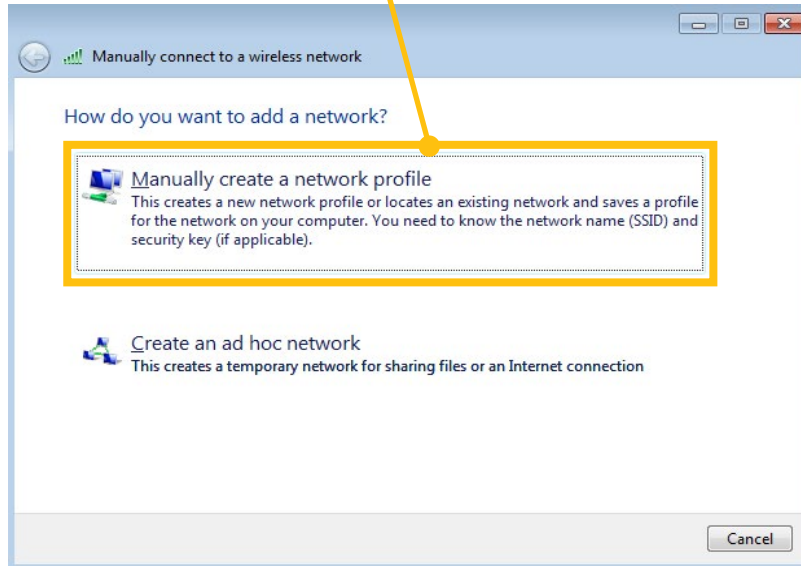
Select 'Manage wireless networks'.



The wireless network manager now opens, select the 'Add' button.

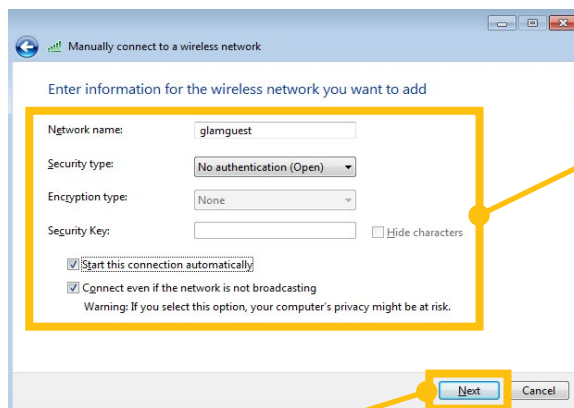


Windows will now prompt you as to whether you would like to make a manual wireless network connection, or an ah-hoc connection, select 'Manually create a network profile'



The manual network profile wizard will now appear on screen.

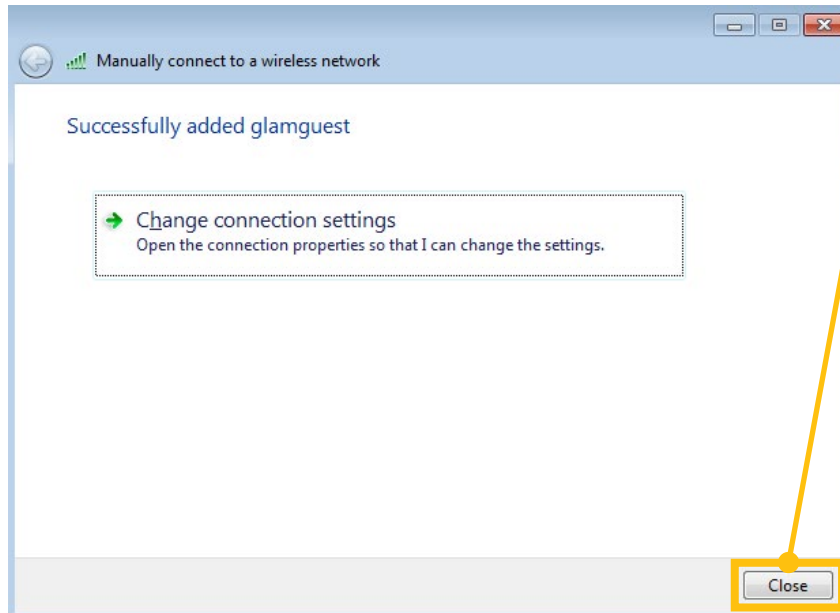
Please enter the following information.



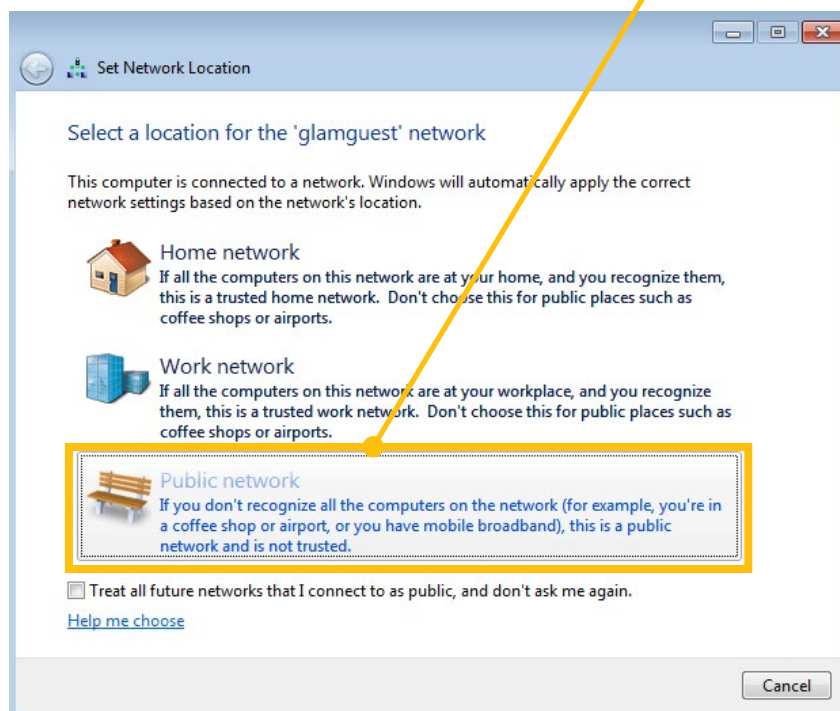
Network name : glamquest
Security type : No authentication (Open)
Encryption : None
Security key : Leave blank
Start this connection automatically : User's choice.
Connect even if the network is not broadcasting : Tick

Press 'Next' to continue.

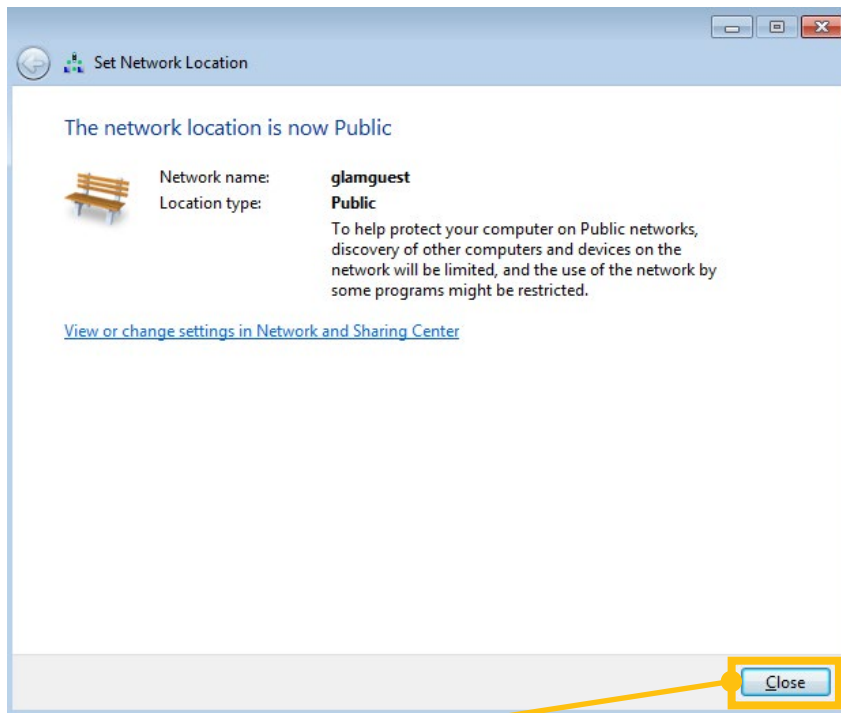
A message will now appear on screen informing that you have successfully added a wireless profile for the Glamquest wireless network, click on 'Close' to finish the wizard.



The very first time you connect to Glamquest, you may find your computer prompts you to set a network location, please select 'Public', this will prevent your computer sharing resources over the network.



You will now be notified that the Glamquest network has a 'Public' network



Click on 'Close' to finish.

You will now find that your wireless network icon changes to illustrate that your computer is now connected to the Glamquest wireless network, you will also be able to see in your wireless configuration that Glamquest is now connected.



Step 4 Entering your guest username and password.

Your device should now be configured successfully for use with the Glamguest network, in order to connect and complete the process you need to authenticate yourself on the network, this can be done by launching a web browser (Internet Explorer / Firefox / Safari / Opera etc.), at which time a Glamguest authentication screen will appear, as requested enter the guest username and password which you have been given by your staff sponsor (*see page 2 for instructions on how to obtain a username and password*), then click on 'Log In'.

Web Authentication - Windows Internet Explorer

https://glamwebauth.glam.ac.uk/fs/customwebauth/guestlogin.htm

EndNote Web 3.3 Capture Help

Favorites Suggested Sites Web Slice Gallery

Web Authentication

University of South Wales (Treforest & Cardiff)

Welcome to the Guest Wireless Service

Please input your supplied Guest username and password.

Username

Password

Log in

By logging into this system you acknowledge that you are bound by the [University IT Regulations](#), in particular Section 3

NOTE: This service is NOT for use by University Staff or Students and access is limited to authorised guests, visitors and contractors ONLY. If connected please disconnect immediately.

Important Note

Pressing the 'Enter' key on the keyboard will not log you in to the network, please click on the 'Log In' button.

Your device should now be configured successfully for use with the Glamguest wireless network