

# How to... Create A Guest Account On The Glamquest Wireless Network

## Glamquest

### How to... Create A Guest Account On The Glamquest Wireless Network

## Introduction

The Glamquest service provides visitors to the University Of South Wales with internet access via wireless network connections on your own equipment.

The service is now available at Cardiff, Glyntaff and Treforest campuses only.

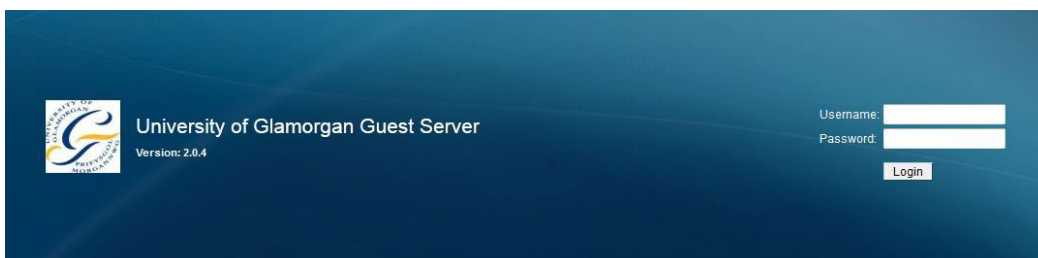
Any member of staff with the University can become a “sponsor” and create Glamquest accounts for use by University guests.

(Although usually staff will request this through their Departmental IT Coordinator)

In order to become a sponsor the member of staff needs to contact IT customer support who will log the request to have sponsors name added to the correct security group.

This will allow the sponsor to log into the guest account service.

<https://glamquest.glam.ac.uk>



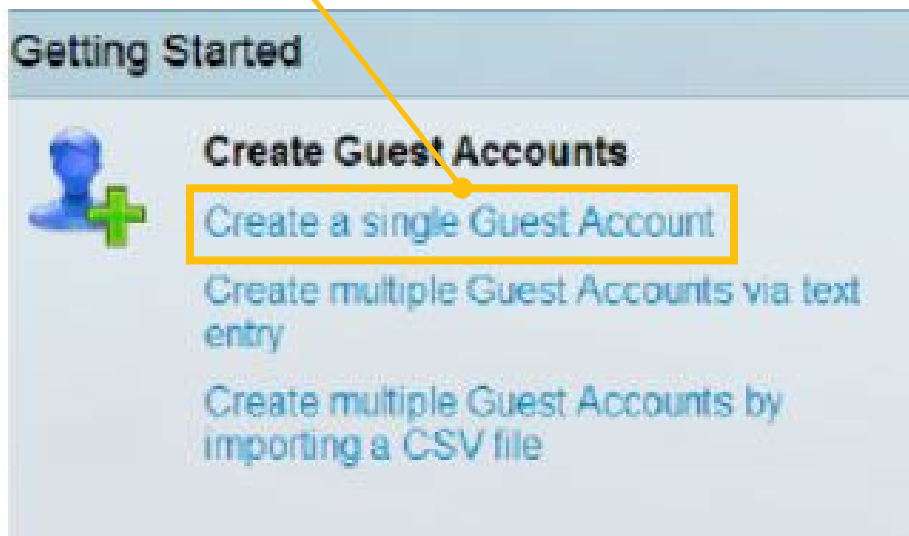
University of Glamorgan Guest Server  
Version: 2.0.4

Username:   
Password:

## Creating a Glamquest username and password

Once logged in, the Getting Started page will open.

In order to setup a new account select the 'Create a single Guest Account' link under the Create Guest Accounts option.

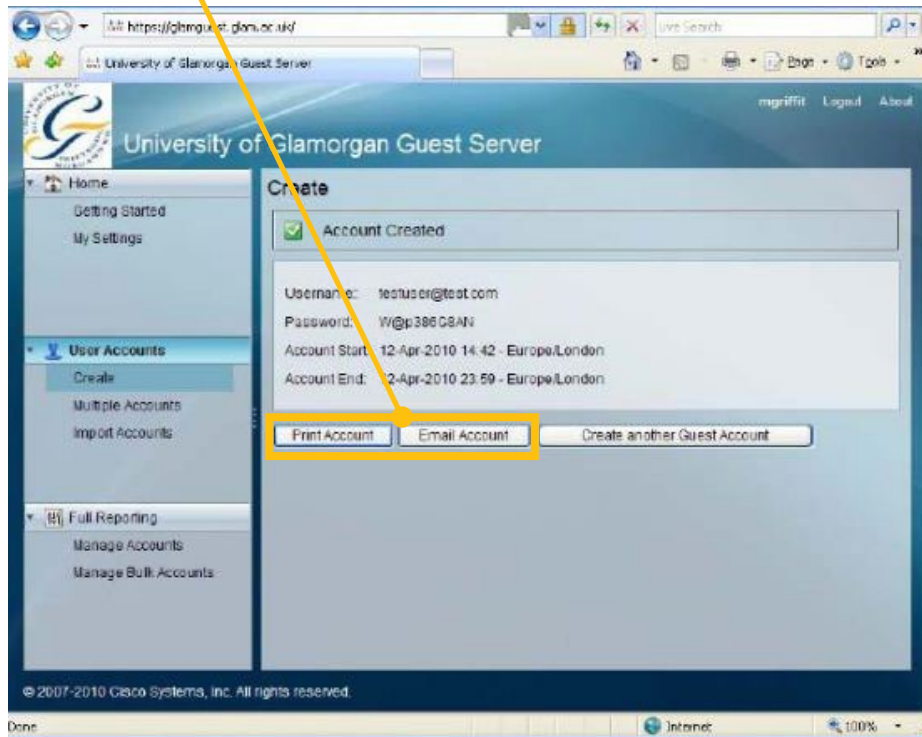


This will open the Create page, all fields need to be completed in order to create the account then select Add User.

The screenshot shows the 'Create' page with the 'Create a Guest User Account' form. The form includes fields for 'First Name', 'Last Name', 'Company', 'Email Address', 'Timezone', 'Account Start' (Date and Time), and 'Account End' (Date and Time). The 'Email Address' field is highlighted with a yellow box, and a yellow arrow points to it from the text above. The 'Add User' button is also highlighted with a yellow box, and a yellow arrow points to it from the text above.

The email address of the visiting person is used by the service as the username when logging on.

The created details will then display on screen and allow the sponsor to print out or email the information.



Guidance on how to use the Glamquest service can be found at

<http://its.southwales.ac.uk/glamquest-guides>